

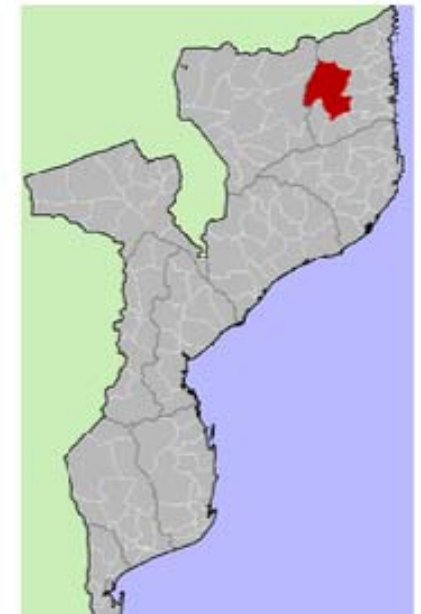


Pemba	
Stato:	 Mozambico
Provincia:	Cabo Delgado
Distretto:	Pemba-Metuge
Coordinate:	 12°58'S 40°32'E
Abitanti :	84.897 (1997)

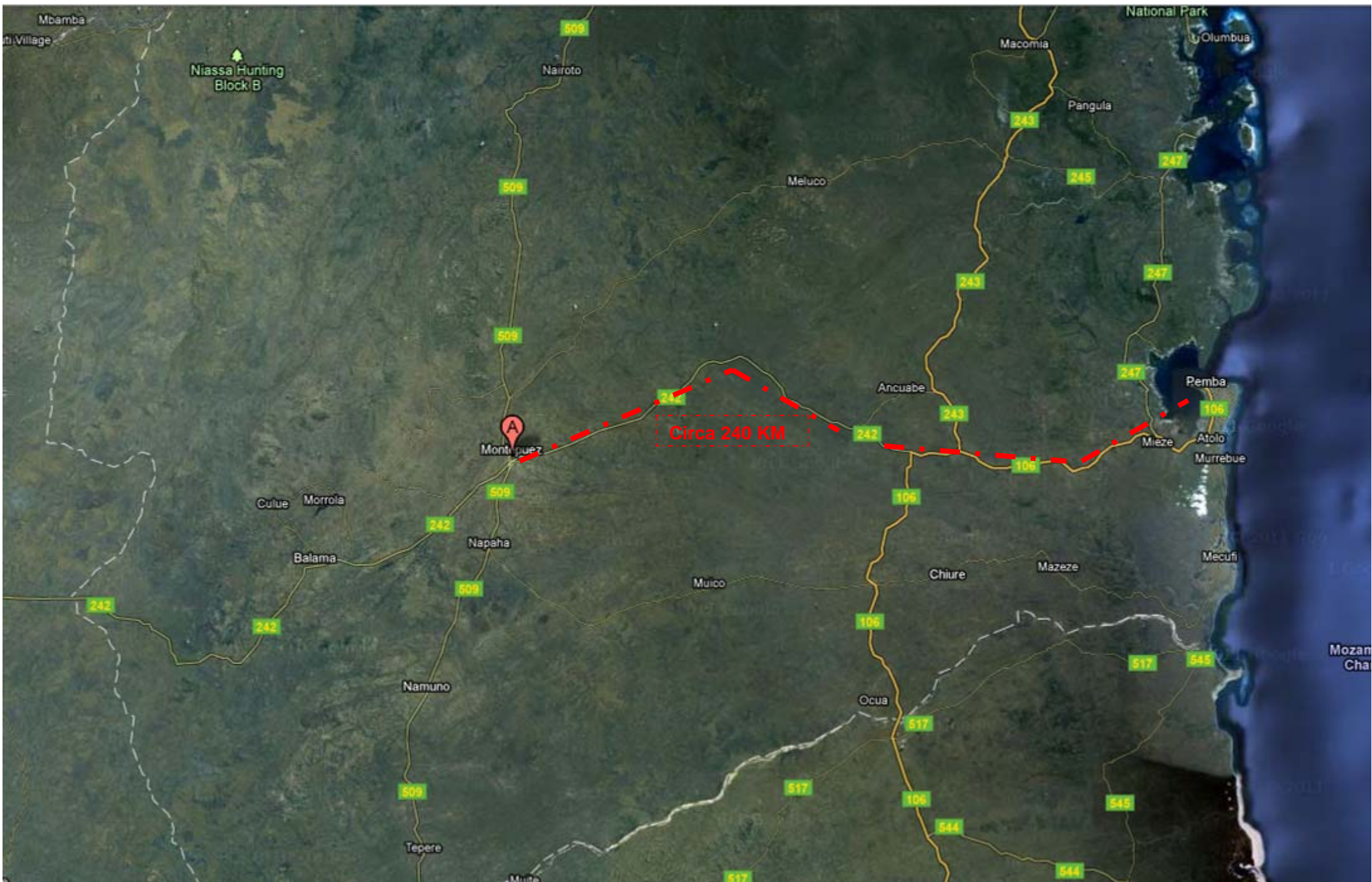


Distretto di Montepuez	
Stato:	 Mozambico
Provincia:	Cabo Delgado
Capoluogo:	Montepuez
Coordinate:	 13°07'00"S 39°00'00"E
Superficie:	15.871 km ²
Abitanti:	149.181 (1997)
Densità:	9,40 ab./km ²
Fuso orario:	UTC+2



MOZAMBICO

Missione di Montepuez



<http://g.co/maps/9ps6> - Vai sul link per scorrere e ingrandire la mappa



©2011 Google - Immagini ©2014 TerraMetrics, Map data ©2011 Tracks4Africa - Termini e condizioni d'uso - Modifica

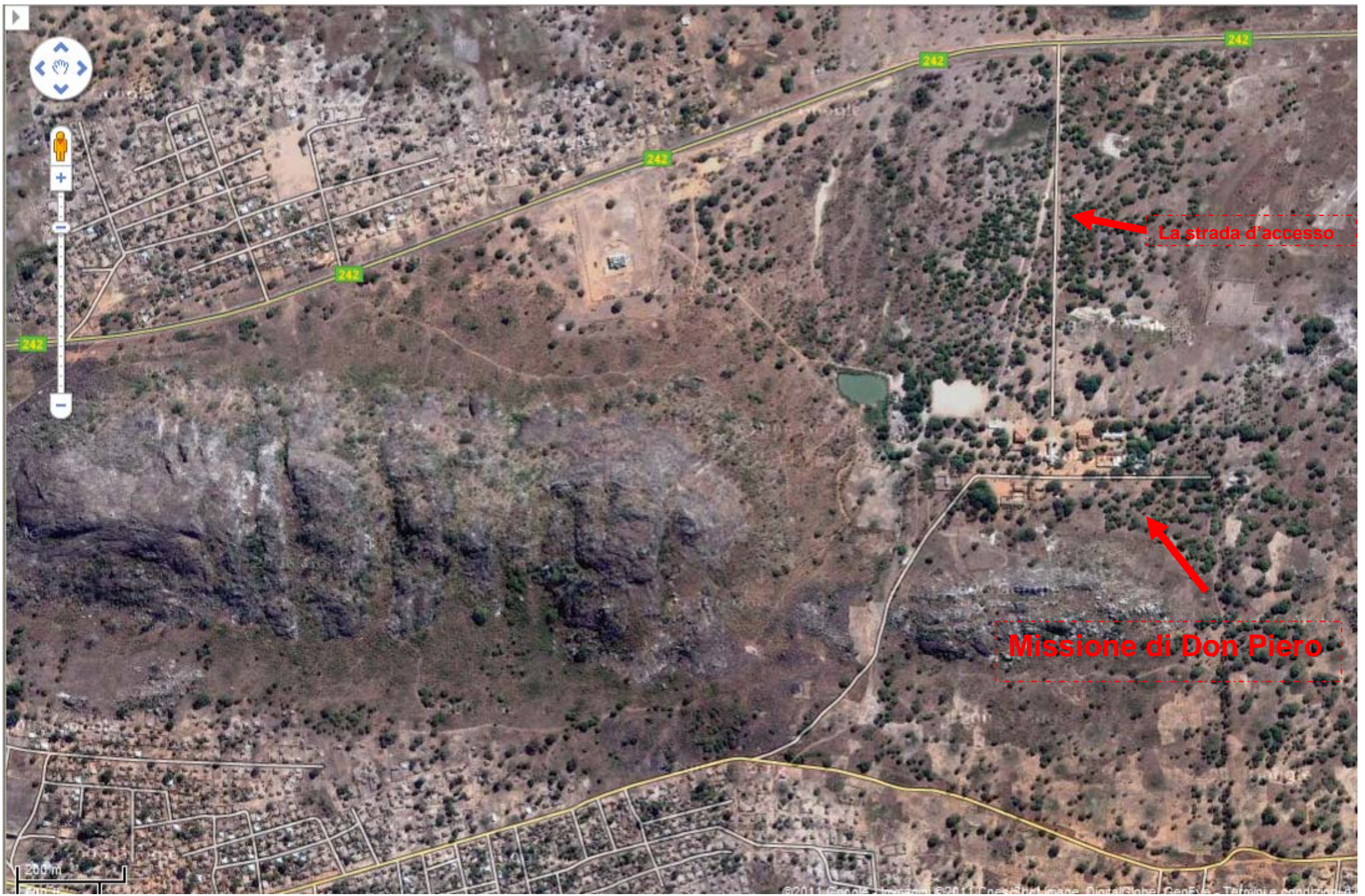
<http://g.co/maps/pi9c>



<http://g.co/maps/juqf>



<http://g.co/maps/djza>



La strada d'accesso

Missione di Don Piero

